

## Day 1 - Site 1:

Bethel, PE

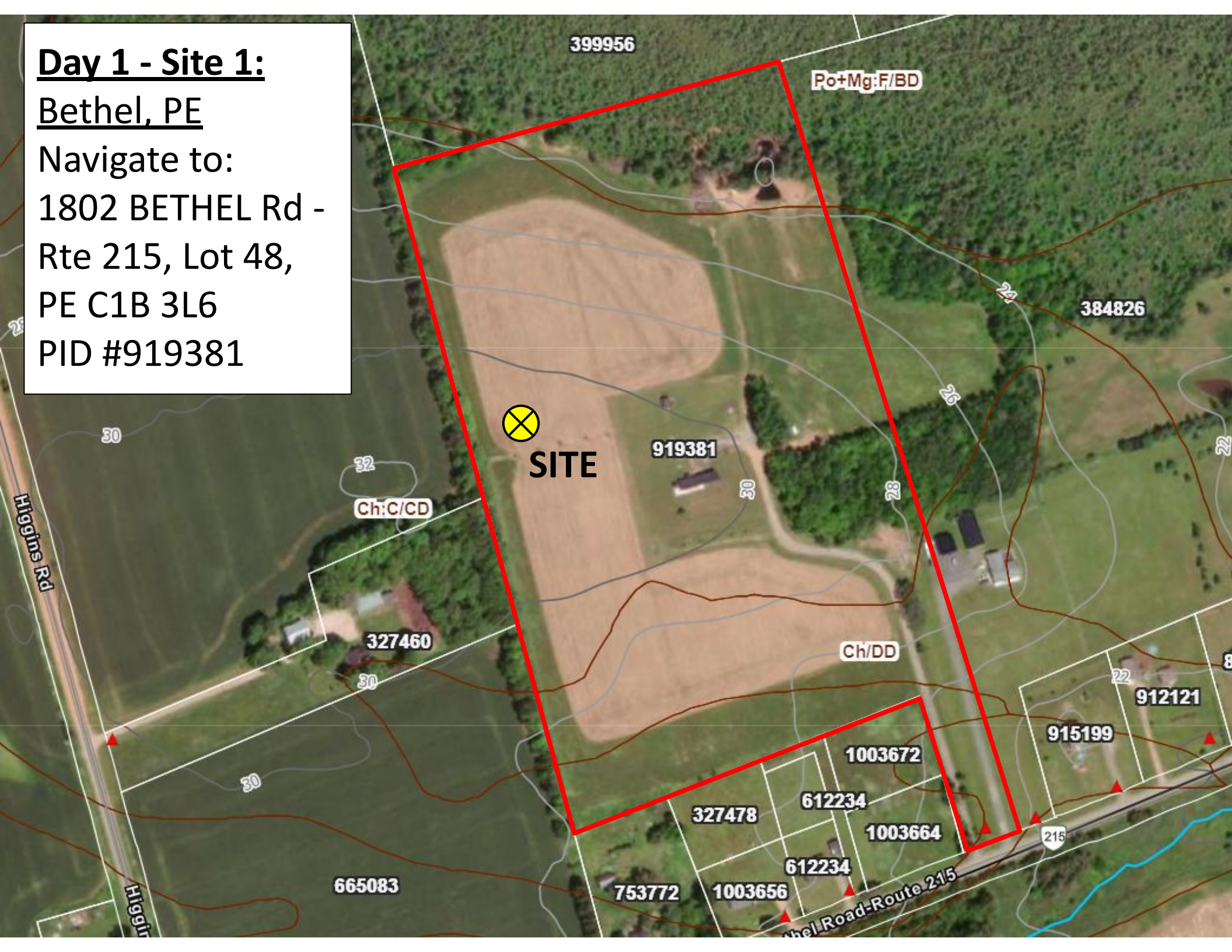
Navigate to:

1802 BETHEL Rd -

Rte 215, Lot 48,

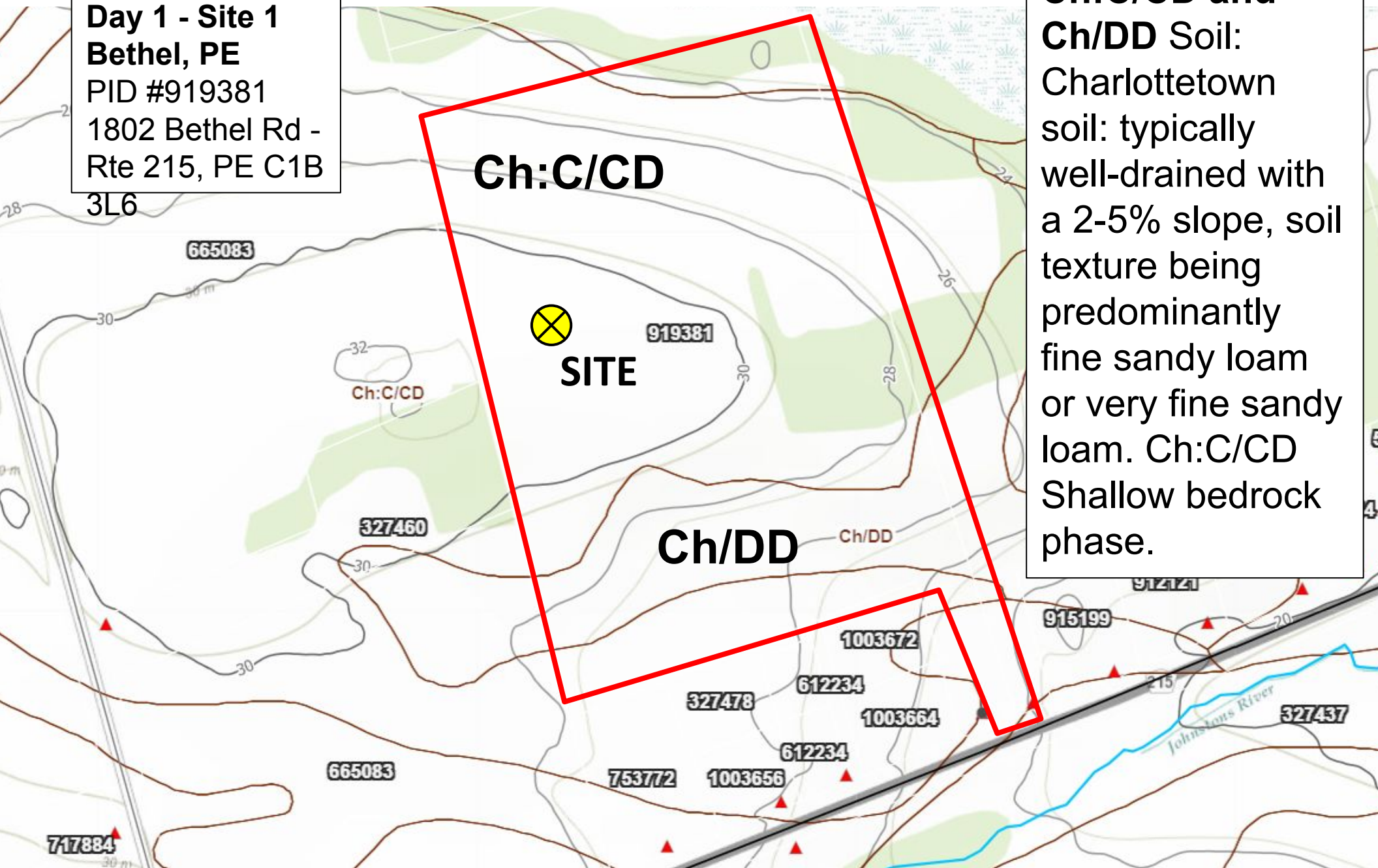
PE C1B 3L6

PID #919381





**Day 1 - Site 1**  
**Bethel, PE**  
PID #919381  
1802 Bethel Rd -  
Rte 215, PE C1B  
3L6



**Ch:C/CD and Ch/DD Soil:**  
Charlottetown soil: typically well-drained with a 2-5% slope, soil texture being predominantly fine sandy loam or very fine sandy loam. Ch:C/CD Shallow bedrock phase.

**Day 1 - Site 2: Vernon Bridge, PE**

Navigate to: 193 Glenway Dr.,

Vernon Bridge, PE COA 2E0

PID #1016484



**Brick gates**

**Site**

**193 Glenway Drive  
(Navigate to)**

**Kelly's Cottage  
143 Glenway Drive  
Washrooms available**



Day 1-Site 2  
McInnis Point  
Glenway Drive,  
Earnscliffe  
PID# 1016484

0 0.05 0.10  
kilometers

Vacant lot located opposite  
193 Glenway Dr, Vernon Bridge

Fp:D/CE-OI



Wf/CE

Eg/BE

Eg/BE

**Fp (Fifteen Point)** - Mod. well drained, very fine textured and stone free, typically Loam to Silt Loam. Very slow permeability.

**Wf (Wolfe Inlet)** - Imperfectly drained, Loam or silt loam or silty clay. Clay content in excess of 18%, glacial till, slow vertical permeability. Seasonal perched water table for prolonged periods. Faint mottles in A horizon. Very dense in lower B and C horizons.

**Eg (Egmont)** - Poorly to very poorly drained, surface horizons remain saturated for long periods. Distinct (in A) to faint (in B) mottles. Loam to clay loam. Parent material is dominantly silty clay.

⊕ Proposed test pit location



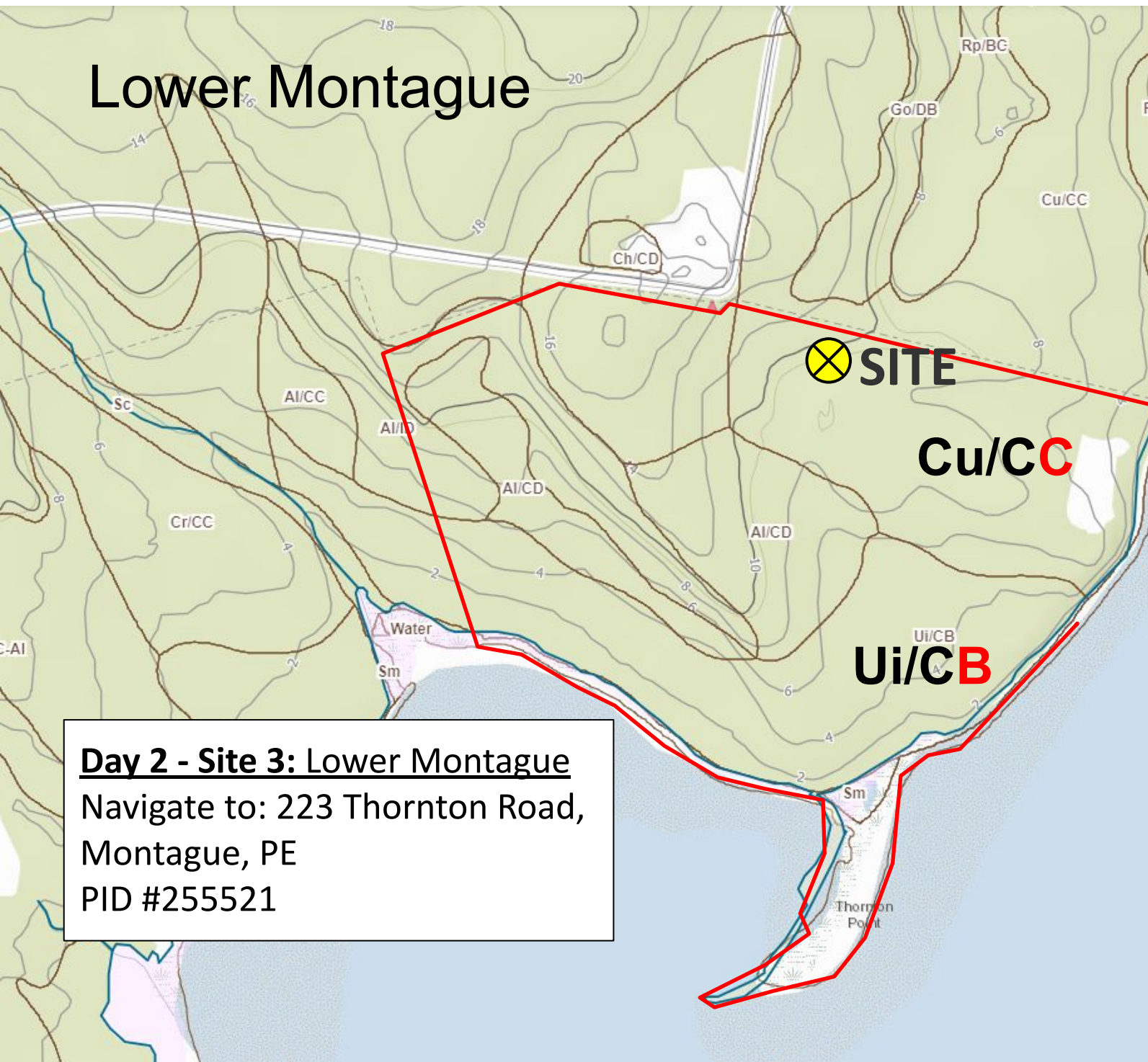


**Day 2 - Site 3: Albion/  
Lower Montague**

Navigate to: 223 Thornton  
Road, Montague, PE  
PID #255521



# Lower Montague



**Cu/CC Soil:**  
Culloden,  
typically  
well-to-rapidly  
drained and soil  
texture being  
sandy loam.

**Ui/CB Soil:**  
Uigg,  
imperfectly  
drained and soil  
texture being  
loamy sand or  
gravelly loamy  
sand.

**Day 2 - Site 3: Lower Montague**  
Navigate to: 223 Thornton Road,  
Montague, PE  
PID #255521